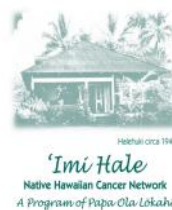


# 'Imi Hale

Native Hawaiian Cancer Network—Newsletter



*Aloha Kakou!*

Nowemapa 2011



## A Gathering to Remember: Highlights from the 4th Annual Ho'okele i ke Ola Conference

by Amanda Allison

Seventy-five patient navigators and champions of Cancer Patient Navigation came from across the state to attend our 4<sup>th</sup> Annual Ho'okele i ke Ola Patient Navigation Conference on August 25 & 26, 2011 at the 'Ohana Honolulu Airport Hotel. The focus for this year's conference was Lung Cancer.

Resource providers from 15 community agencies and organizations shared informational displays and materials at the opening night's Resource Fair. Back by popular demand, the resource fair provided opportunities for navigators to network with each other and the community organizations that serve their patients. One navigator said, *"I loved the resource fair. It was good to have agencies that don't deal directly with cancer but may be needed in someone's cancer journey."*

**Dr. Harold P. Freeman** was honored during the evening program in recognition of his vision and leadership in establishing cancer patient navigation nationally and the inspiration he has provided to 'Imi Hale for cancer patient



navigation in Hawai'i. The 2011 Ho'okele i ke Ola award to Dr. Freeman was accepted by Dr. Freeman's long-time associate, Jane McDonald Daye, formerly with the Center to Reduce Cancer Health Disparities. We also recognized those who helped to inform the program's development and curriculum. The evening culminated with 'Imi Hale's Co-PI, Kathryn Braun reporting on the progress and results of 5 years of the Ho'okele i ke Ola Patient Navigation Training Program.

Day 2 of the conference was jam-packed with educational sessions from screening to survivorship and everything in between. Attendees learned about the lung cancer journey from medical experts, experienced navigators, and others who support lung cancer patients.

Dr. Geoff Galbraith's presentation on palliative care and hospice was one of the highlights of the conference. Information on the changing insurance landscape for hospice excited navigators. They learned that UHA now covers concurrent treatment and hospice care, and other insurers are considering doing the same. Participants better understood the

benefits of initiating palliative care discussions with patients earlier in the cancer care continuum.

There were several firsts at this year's conference. Artwork from The Queen's Cancer Center and Tripler Army Medical Center's "Oncology on Canvas" program (sponsored by Eli Lilly) graced our conference site and provided heartfelt sentiments of cancer patients, survivors and family members.

Another first was a panel of complementary and alternative therapies practitioners. Norma Rawlins presented on acupuncture, Bonnie Jones on massage and Babette Galang on Native Hawaiian healing practices, La'au Lapa'au and Lomilomi. *"Knowing about massage, acupuncture and la'au lapa'au is good information for cancer patients,"* one conference attendee noted.

**Dr. Clayton Chong**, 'Imi Hale's PI, gave the navigators a renewed charge with his provocative talk on Obesity and Cancer. He also emphasized the need to focus navigation efforts on those who need it most if we are to truly address cancer health disparities.

The Ho'okele i ke Ola team extends a big mahalo to all the presenters and others who made this conference so successful and such a wonderful experience for growth.



Jane Daye (holding award) and some of our Cancer Patient Navigator champions (L-R) Melissa Bojorquez, Kehau Matsumoto, Lani Almanza, Nalani Perreira, Dr. Randal Wada, and Leimomi Shearer

# Two-Day Introduction to Cancer Patient Navigation Training in Hilo, Hawai'i

by Jermy Domingo

On September 29 & 30, 2011, the Ho'okele i ke Ola team partnered with Leimomi Shearer of Hui Mālama Ola Nā 'Ōiwi (HMON'Ō) to organize a 2 day, Introduction to Cancer Patient Navigation training on Hawai'i Island. The request came from the staff of HMON'Ō, North Hawai'i Community Hospital, and Kona Community Hospital. Fifteen trainees learned from Hilo's local experts about cancer basics; physical, psychosocial and cultural issues associated with cancer care; end-of-life planning; and navigator self-care.

Although the training was much abbreviated from our regular 48-hour training, participants stated that they learned new things, felt more confident about issues relating to cancer,

and felt more equipped and confident to provide services to their clients who are on a cancer journey. Those new to navigation appreciated the training, but they also expressed that they would like to attend the full 48-hour training in the future.

**Mahalo nui loa** to our faculty and community partners who make quality trainings like this possible.

- **Kevin Wilcox, MD**, Hilo Medical Center—Cancer 101
- **Leimomi Shearer**, Hui Mālama Ola Nā 'Ōiwi— Cultural Issues in Cancer Care
- **Cheryl Ramos, PhD**, University of Hawai'i Hilo— Psychosocial issues faced by cancer patients
- **Jermy Domingo, MPH**, 'Imi Hale— Introduction to Cancer Patient Navigation

- **Cathy Hough**, Hospice of Hilo— Grief & Loss
- **Elise Davis, MPH**, 'Imi Hale—Helping patients manage their cancer care records
- **Leanne McKenzie, APD**— Nutrition during Cancer Treatment
- **Terri Imada, APRN**—High Risk Breast Program
- **Brenda Ho, RN, MS**, Hospice of Hilo—End-of-Life Planning
- **Kanani Texeira, MD**, North Hawai'i Community Hospital— Role of the Primary Care Physician in Cancer Care
- **Amanda Allison, MA**, Queen's Medical Center—Clinical Trials
- **Sandra Claveria**, Hawai'i Community College— Maintaining professional boundaries
- **Lorrie Akina**, Hui Mālama Ola Nā 'Ōiwi— Risk Management
- **Sandy Oda**, Rehab at Hilo— Physical Therapy for Cancer Patients



**Sandy Claveria** speaks to Ho'ala Hou—Renewing Your Gifts



**Leimomi Shearer** presenting on Cultural Issues in Cancer Care



**Dr. Kanani Texeira** addresses the Primary Care Physician's role in cancer care.



Left: Big Island participants from HMON'Ō, North Hawaii Community Hospital and Kona Community Hospital



Right: **Dr. Kevin Wilcox** educates about Cancer



# *Ho‘omaika‘i!*

## *Celebrating Achievements*

*‘Oni kalalea ke ku a ka lā‘au loa.  
A tall tree stands above the others.  
Said of a person of outstanding achievements.  
—‘Ōlelo No‘eau #2520*

## **Prestigious Award for Jamie** **RWJ Community Health Leaders National Award Winner**

**Congratulations  
Jamie!!**

**Dr. Jamie Boyd** wins the prestigious Robert Wood Johnson Foundation Community Health Leaders Award. One of 10 recipients this year, Jamie personally received her award in Baltimore this month. She was joined by her husband, Jim Dutton, and friends from the Center to Reduce Cancer Health Disparities, Dr. Ken Chu and Dr. Ming Zhao, and Kehaulani Butts from the Association of Hawaiian Civic Clubs. This highly competitive award honors 10 outstanding and unrecognized individuals each year who overcome daunting odds to improve health and health care, especially in underserved populations in communities across the U.S. The *Community Health Leaders Award* elevates the work of outstanding individuals to bring national visibility to their extraordinary contributions. Each awardee receives \$125,000 to support their ongoing work. This award highlights Dr. Boyd’s Pathways Program at Windward Community College, which provides opportunities for the Certified Nurse Aid (CAN) graduates to advance to the Associate Degree in Nursing or the Licensed Practical Nurse Program at Kapi‘olani Community College. This award duly acknowledges how Jamie single-handedly raised \$825,000 for this program and persevered to create opportunities for others.



Dr. Ming Zhao and Dr. Ken Chu celebrated with Jamie at the RWJ Awards dinner in Baltimore

## **Hui Mālama Ola Nā ‘Ōiwi: Outstanding Organization in Tobacco Control, Coalition for a Tobacco-Free Hawai‘i (CTFH)**

On October 26, 2011, Hui Mālama Ola Nā ‘Ōiwi (HMON‘Ō) was awarded “Outstanding Organization in Tobacco Control” at the Coalition for a Tobacco-Free Hawai‘i’s Annual Meeting. As one of five Native Hawaiian Health Care Systems, HMON‘Ō provides tobacco cessation services to its clients. Its tobacco prevention efforts is led by Leimomi Shearer, Tobacco Cessation Program Manager, who has been a strong advocate for the coalition for many years. She has served on CTFH’s Board of Directors, and currently serves on the Tobacco-Free East Hawai‘i Advisory Council and ‘Imi Hale’s Community Advisory Group.



Steve Pavao, Leimomi Shearer, Clifford Chang, Deb Zysman  
Photo courtesy of Coalition for a Tobacco-Free Hawai‘i

## **Megan Inada Hagiwara, MPH, Outstanding Adult Advocate of the Year, Coalition for a Tobacco-Free Hawai‘i**

Megan Inada Hagiwara, MPH also was recognized for her outstanding work in tobacco cessation at the CTFH Annual Meeting last month. Megan is well-known in the Tobacco Cessation arena and is the Tobacco Programs Coordinator for Kokua Kalihi Valley Comprehensive Family Services. She has developed health education materials addressing tobacco use and betel nut chewing for the clientele at her clinic. In 2011, she served as the Chairperson for CTFH’s Policy workgroup, displaying her leadership and strong facilitative skills. She also serves on ‘Imi Hale’s Community Health Education Advisory Group.



Steve Pavao, Megan Inada Hagiwara, Clifford Chang, Deb Zysman. Photo courtesy of Coalition for a Tobacco-Free Hawai‘i

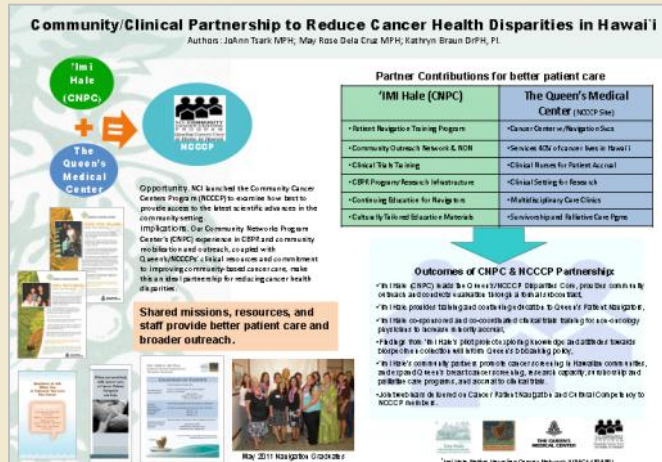
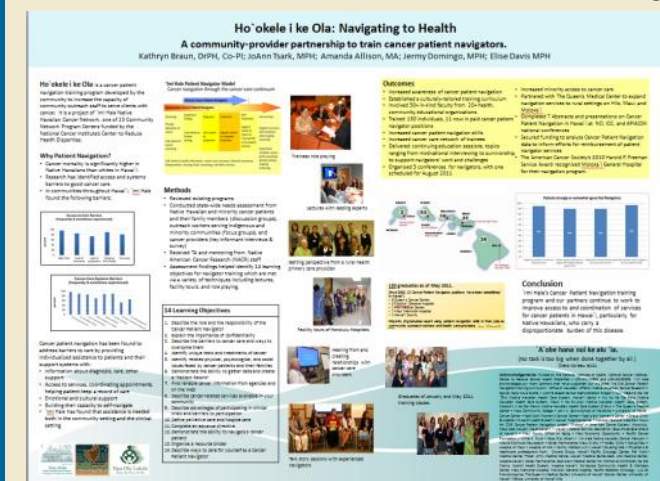
# 'Imi Hale Highlights from the CRCHD Cancer Health Disparities Program Meetings 2011

'Imi Hale staff attended the 2011 CRCHD Cancer Health Disparities Program Meeting in Bethesda, Maryland in July. The meeting included plenary sessions, programmatic meetings, a mock research review session, skill-building workshops, networking opportunities, and poster competitions.

Dr. Kathryn Braun, 'Imi Hale Co-PI participated with her PI colleagues in the Community Networks Program Centers (CNPC) Program Meeting. She reported on 'Imi Hale's current activities and highlighted projects.

There were Meet and Greets every night for participants to view posters and talk story with colleagues.

**'Imi Hale Posters Highlight Partnerships:** 'Imi Hale staff presented 2 posters at the Meeting: 1) Community/Clinical Partnerships to Reduce Cancer Health Disparities in Hawai'i (J Tsark, MR Dela Cruz, K Braun) and 2) A Community-Provider Partnership to Train Cancer Patient Navigators for Native Hawaiians (K Braun, J Tsark, A Allison, J Domingo and E Davis).



## Dr. Ken Chu was honored by CRCHD staff and colleagues for his 39 years of NIH service.

Dr. Chu served as 'Imi Hale's project officer and mentor since inception in 2000. Dr. Chu's family was present to hear Dr. Sanya Springfield and invited guests, Dr. Claudia Baquet, Dr. Elmer Huerta, Dr. Moon Chen and many others, share their heartfelt appreciation for his contributions and dedication.



JoAnn Tsark presented Dr. Ken Chu with a maile lei from all his fans at 'Imi Hale



Dr. Ken Chu (center with lei) is surrounded by NIH-CRCHD staff and friends



JoAnn Tsark gave Dr. Chu a Race to Heal t-shirt from Dr. Clayton Chong. Dr. Moon Chen is also pictured.



# Got 30 minutes?

If you are a Primary Care Physician, you are an important messenger about clinical trials to your patients who get cancer.

Trained staff from The Queen's Cancer Center, 'Imi Hale Native Hawaiian Cancer Network, and the UH Cancer Center are available to talk with Primary Care Physicians (PCP) and their staff about, **Why Clinical Trials are Important to Your Practice and Your Patients Who Get Cancer.**

This cadre of presenters have all been trained by ENACCT, the Education Network to Advance Cancer Clinical Trials, and they are ready to hit the road! In 30 minutes, speakers cover: 1) What are clinical trials, 2) Myths

A physician's recommendation is often the primary factor influencing a patient's decision to participate in a clinical trial. However, only 2% of primary care physicians discuss clinical trials with their patient.

many doctors have about clinical trials, and 3) Why doctors are important "messengers" about clinical trials. Educational materials are provided (and refreshments too!).

If you are a Primary Care Physician or

know one who would like to learn more about discussing Clinical Trials with their patients, call The Queen's Cancer Center – Research Office 691-8548, or Koa Robinson at 'Imi Hale, 526-1700.



This program is made possible by The Queens Medical Center/NCI Community Cancer Centers Program.

## Sharing Lessons Learned in CBPR with SDSU/UCSD Partnership

Project Director JoAnn Tsark was invited to share insights and lessons learned in community-based participatory research (CBPR) at a recent CBPR Forum sponsored by the San Diego State University/UC San Diego Cancer Center Comprehensive Partnership. Also presenting was the inspiring Dr. Roberto Villarreal, M.D., M.P.H., D.P.H., Vice President of Community Initiatives and Translational Research at University Health System, San Antonio, Texas. The 2 day forum included presentations, discussions, team-building exercises and fellowships between SDSU/UCSD students and fellows, junior faculty, and members from the San Diego, California community. This event preceded the Partnership's announcement of pilot research funds to support cancer health disparities research, including projects utilizing CBPR principles. As believers in research that involves, respects, and empowers communities, we send a big ***Maika'i loa!*** to the leadership and Community Liaison Subcommittee of the SDSU/UCSD Partnership for hosting this informative and interactive event.



Keynote speakers: Dr. Roberto Villarreal (center in plaid shirt) and JoAnn Tsark (to his R) with leadership from the SDSU/UCSD Partnership and forum participants.

## 'Imi Hale Nā Liko Noelo Feature:

### Lana Ka'opua, PhD, DCSW, LSW

Myron B. Thompson School of Social Work, University of Hawai'i



Dr. Lana Ka'opua, associate professor at the University of Hawai'i, School of Social Work, has an established research career spanning health/mental health practice, intervention research, Native Hawaiian and Pacific Islander populations, and medically underserved women.

On July 20, 2011, Dr. Ka'opua and Mr. Raymond Alejo, presented to 'Imi Hale's joint councils ('Imi Hale Center Steering Committee and Community Advisory Group) at the Queen's Harkness Board Room about their community-based research project, "Increasing Cancer Screening Among Those Living with HIV."

Mr. Raymond Alejo, from Life Foundation, is a member of the community advisory panel advising Lana on the

project. He shared his personal experiences living with HIV and being a nurse working with other people living with HIV. He described many barriers encountered by people living with HIV in Hawaii, including stigma, discrimination, and lack of resources.

Dr. Ka'opua reported that people living with HIV were now being diagnosed with Non-AIDS Defining Malignancies (NADM). These are cancers that everyone can get--like breast cancer and colorectal cancer--due to the fact that HIV treatments now extend the lives of individuals with HIV. This treatment is called Highly Active Antiretroviral Therapy (HAART). Unfortunately, NADM are more aggressive and occur at a younger age in people with HIV compared to the rest of the population. Among those

who have HIV in Hawai'i, 9% are Native Hawaiian or Pacific Is-

lander (NH/PI). Many NH/PI HIV patients also experience poor socioeconomic status and live in rural areas, with limited access to HIV and primary care.

The community advisory panel for the project decided that they would pursue an educational intervention to increase colorectal cancer screening among individuals that have HIV. Lana and her team, which includes Kevin Patrick and Talita Bowen of the AIDS Community Care Team, will be developing and testing this educational intervention in the coming year.

## 'Imi Hale Welcomes Visitors from the Shizuoka Cancer Center in Japan by JoAnn Tsark

In October, we were delighted to welcome Ms. Eiko Marumo, MBA, Management Center Administrative Assistant, and Ms. Yayoi Hirose, RN, Head Nurse, Patient Education and Disease Management Center, with their friend and interpreter Mr. Andy Ninomiya to meet with 'Imi Hale staff and Amanda Allison from the Queen's Cancer Center. They came to learn more about our Ho'okele i Ke Ola - Cancer Patient Navigation Training Program. 'Imi Hale was one of many stops for Ms. Marumo and Ms. Hirose. They also visited the Hana Clinic and met with Karli Smallwood, Cancer Patient Navigator at Maui Memorial Hospital, who sent them our way (Thanks Karli!).

nology and thorough support for patients. The hospital, with 38 divisions and 569 beds, aims to be a world leader through patient-oriented cancer treatment. It



L-R: Amanda Allison, Yayoi Hirose, JoAnn Tsark, Eiko Marumo and Andy Ninomiya.

Opened in 2002, the Shizuoka Cancer Center offers first class cancer treatment with cutting-edge medical tech-

features medical professionals from all over Japan, the world's most advanced

proton-beam therapy facilities, and the latest medical equipment. To pursue patient-oriented care, the center has launched a multi-professional team approach that calls for close collaboration among physicians, nurses, pharmacists, dietitians, physical therapists, and other employees. The most up-to-date integrated hospital information system allows professionals to share information about patients and enables the hospital to create a paperless and filmless work environment. Our guests were very interested in how Cancer Patient Navigation is integrated into patient care in Hawai'i and enthusiastic about our patient education materials. It was an invigorating discussion all around, and capped off with a tour of the Queen's Cancer Center with Dr. Francisco Conde. We look forward to future visits and sharing.



# 'Imi Hale Materials: Back By Popular Demand!

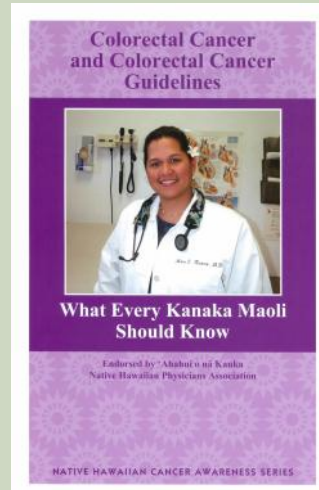
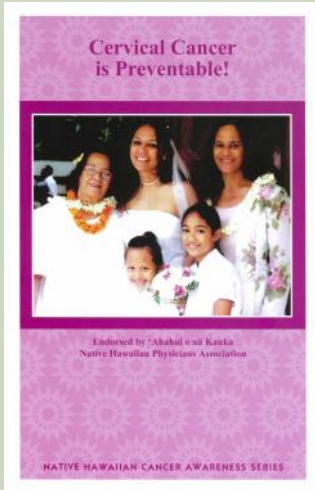
'Imi Hale has developed over 50 different cancer education materials and curricula, tailored for Hawaiian communities. We have been fortunate to have resources from national grants and contracts, as well as local foundations and agencies, to develop, test, print and distribute these materials. We provide these materials at no cost to agencies and healthcare providers serving our Hawaiian communities.

Each piece requires 6—12 months and many partners (50-300) to move it from a concept to a finished piece. The materials featured here are popular pieces that have been updated and revised.

We appreciate all the survivors, community outreach staff, health professionals, and health literacy experts who have assisted us in this work. **Mahalo!**

New and revised pieces are on the horizon, so be on the lookout for upcoming *E Kakou* fliers and announcements.

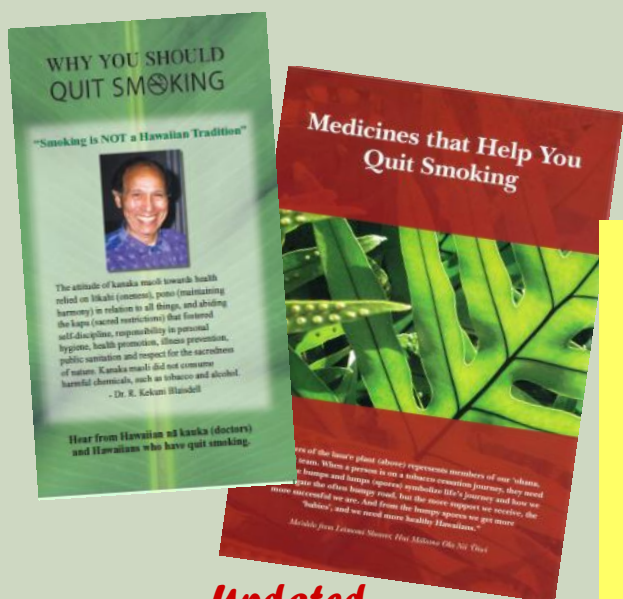
## Updated Cancer Screening Series: Cervical Cancer & Colorectal Cancer



## Updated End of Life Series



## Diabetes Prevention Booklet



## Updated Tobacco Cessation Brochures: Why You Should Quit Smoking and Medicines that Help You Quit Smoking

To order materials,  
contact Koa Robinson at 'Imi  
Hale, 526-1700, or  
[krobinson@papaolalokahi.org](mailto:krobinson@papaolalokahi.org)

Materials are provided free to  
the extent possible.  
Postage charges may apply.  
**SALE of any 'Imi Hale  
materials is not permitted.**

**Mahalo** to the Department of  
Health for supporting the  
printing of the tobacco

Please visit [www.imihale.org](http://www.imihale.org) to view and download these and other cancer education materials.

# What's New at NCI by Koa Robinson



## R2R: Cyber-Seminar Series

**Research to Reality (R2R):** The R2R Cyber-Seminar series continues to provide excellent presentations on a variety of public health issues. The topic for the next cyber-seminar is "mHealth (mobile health) Initiatives: Mobilizing Cancer Prevention and Control," which

takes place on November 15<sup>th</sup>. To register now, visit: <https://researchtoreality.cancer.gov/node/507>.

Here are a couple of interesting cyber-seminars that have been archived on the site recently:

- Reaching Minority Populations: Cancer Control and Prevention for Latino Populations – <https://researchtoreality.cancer.gov/node/445>  
(**Note:** Although they focused on Latinos for this presentation, the resources that are shared can be useful to all groups.)
- The Community Guide: A Resource to Improve Health and Prevent Cancer in your Area – <https://researchtoreality.cancer.gov/node/284>

## New Webpage to View Online Education and Training Resources from NCI

Beginning this month, another resource will be provided by NCI for health professionals. NCI has organized its online tutorials, web-based tools, and video casts in one convenient location:

<http://www.cancer.gov/cancertopics/health-professional-training-tools>

These educational materials provide insight on how to plan evidence-based programs, locate research/practice partnership tools, and use data to communicate messages to your audiences.

To stay abreast with what is currently going on in cancer research, subscribe to the NCI Cancer Bulletin. This biweekly online newsletter provides useful, timely information about cancer research to the cancer community. All NCI Cancer Bulletin issues are archived on the Cancer.Gov website for quick access to previous news stories.

To subscribe and read the latest NCI Cancer Bulletin newsletter, please visit: [www.cancer.gov/ncicancerbulletin](http://www.cancer.gov/ncicancerbulletin).

## 'Imi Hale Bulletin Board



Looking for cancer  
education materials?

Visit:

[www.imihale.org](http://www.imihale.org)



### EDITORIAL STAFF:

May Rose Dela Cruz, MPH  
JoAnn Tsark, MPH  
Kathryn Braun, DrPH

### CONTRIBUTING EDITORS:

Amanda Allison, MA  
Jermy-Leigh Domingo, MPH  
Koa Robinson, MPH

**'Imi Hale**

**Native Hawaiian Cancer Network  
(U54CA153459-01)**

A program of Papa Ola Lōkahi  
894 Queen Street  
Honolulu, HI 96813  
Phone: (808) 526-1700

E-mail: [mdelacruz@papaolalokahi.org](mailto:mdelacruz@papaolalokahi.org)

[www.imihale.org](http://www.imihale.org)

U54CA153459-01